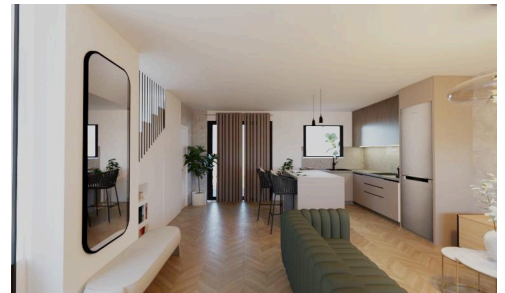
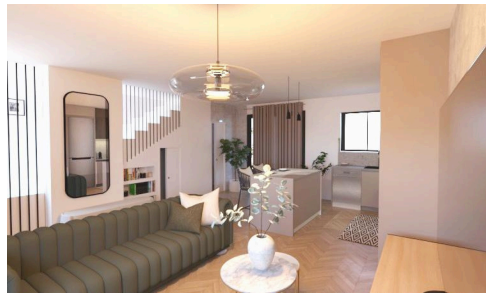


#1701



Spacious Moni Home with Pool and Large Plot

€311,000 ^{+VAT}

📍 Moni, Limassol

Located in the peaceful residential area of Moni, this modern 2+1 -bedroom, 2-bathroom home combines clean architectural design with strong energy performance and lifestyle comfort —

Designed for contemporary living, the property offers 117m² covered internal area plus 14m² uncovered outdoor space with well-planned interiors and practical features throughout. The home is rated Energy Efficiency A and

Bedrooms



3

Bathrooms



2

Covered

92 m²

Energy efficiency rating



A+

nest&co



Anthony Kleopa

☎ (+357) 99441442

✉ info@nestcy.com

