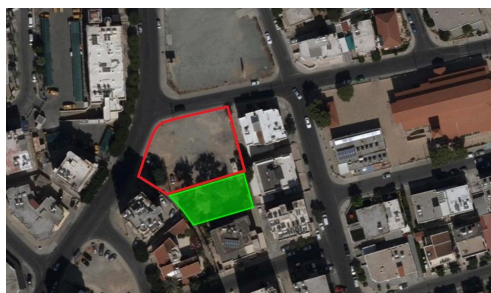


#1363



## Great investment opportunity in Limassol's heart

€1,350,000

 Petrou Kai Pavlou, Limassol

Two adjacent plots with approved licensed mixed-use building architectural plans. Available for sale in a prime location in Limassol. All licenses are valid and available. One of the very few large plots available in the area. They abuts to green area and located walking distance to all amenities.

Area

 1143 m<sup>2</sup>

nest&co



**Katerina Malioti**

 (+357) 99785200

 katerina@nestcy.com

