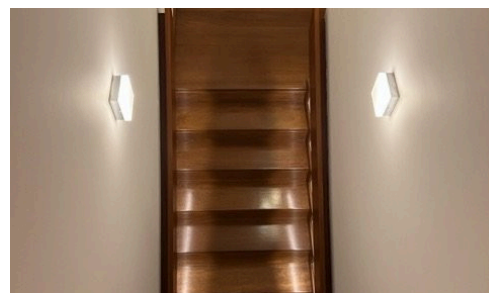
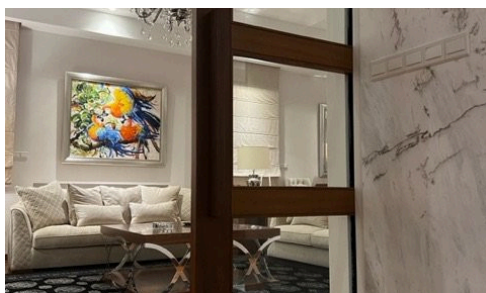


#1110



5 Bedroom Villa In Limassol Panthea

€3,800,000

📍 Panthea, Limassol

House

Basement – 188.7 m²

Controlled-access parking garage for 3 cars

Storage room

Bedrooms

🛏 5

Bathrooms

🚿 4

Covered

📏 600 m²

nest&co



Constantinos Elia

☎ (+357) 99751483

✉ constantinos@nestcy.com

